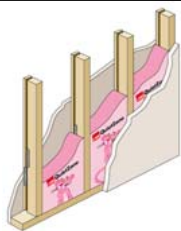
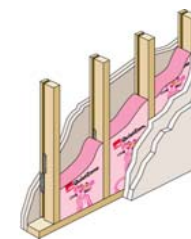


QuietZone® Acoustic Wall Framing



Fire Rating	STC Test No.	STC	Construction Description	Single Layer Gypsum
N.A.	E90-99082	49	2x4 QuietZone® Acoustic Framing on 16" centers single layer ½" type x gypsum drywall each side 3-1/2" QuietZone® Acoustic Batts	
N.A.	E90-99093	50	2x4 QuietZone® Acoustic Framing on 24" centers single layer 5/8" type x gypsum drywall each side 3-1/2" QuietZone® Acoustic Batts	
N.A.	E90-99099	54	2x6 QuietZone® Acoustic Framing on 24" centers, single layer 5/8" type x gypsum drywall each side 5-1/2" QuietZone® Acoustic Batts	
N.A.	E90-01015	52	2x6 QuietZone® Acoustic Framing on 16" centers, single layer 5/8" type x gypsum drywall each side 5-1/2" QuietZone® Acoustic Batts	
N.A.	E90-99127	53	2x6 QuietZone® Acoustic Framing on 16" centers, single layer ½" type x gypsum drywall each side 5-1/2" QuietZone® Acoustic Batts	
Unbalanced Layers Gypsum				
N.A.	E90-99086	53	2x4 QuietZone® Acoustic Framing on 16" centers, double layers ½" type x gypsum drywall one side, single layer other side, each side, 3-1/2" QuietZone® Acoustic Batts	
1 Hr.	E90-99090	54	2x4 QuietZone® Acoustic Framing on 16" centers, double layer 5/8" type x gypsum drywall one side, single layer other side, 3-1/2" QuietZone® Acoustic Batts	
1 Hr.	E90-99095	55	2x4 QuietZone® Acoustic Framing on 24" centers, double layer 5/8" type x gypsum drywall one side, single layer other side, 3-1/2" QuietZone® Acoustic Batts	
1 Hr.	E90-99101	59	2x6 QuietZone® Acoustic Framing on 24" centers, double layer 5/8" type x gypsum drywall one side, single layer other side, 5-1/2" QuietZone® Acoustic Batts	
1 Hr.	E90-01017	55	2x6 QuietZone® Acoustic Framing on 16" centers, double layer 5/8" type x gypsum drywall one side, single layer other side, 5-1/2" QuietZone® Acoustic Batts	

QuietZone® Acoustic Wall Framing



Fire Rating	STC Test No.	STC	Construction Description	Double Layer Gypsum
1 Hr.	E90-99087	57	2x4 QuietZone® Acoustic Framing on 16" centers, double layers ½" type x gypsum drywall each side, 3-1/2" QuietZone® Acoustic Batts	
1 Hr.	E90-99097	58	2x4 QuietZone® Acoustic Framing on 24" centers, double layers 5/8" type x gypsum drywall each side, 3-1/2" QuietZone® Acoustic Batts	
1 Hr.	E90-99091	58	2x4 QuietZone® Acoustic Framing on 16" centers, double layers 5/8" type x gypsum drywall each side, 3-1/2" QuietZone® Acoustic Batts	
1 Hr.	E90-01029	50	2x6 QuietZone® Acoustic Framing on 16" centers, double layers 5/8" type x gypsum drywall each side, 5-1/2" QuietZone® Acoustic Batts	
1 Hr.	E90-99131	60	2x6 QuietZone® Acoustic Framing on 16" centers, double layers ½" type x gypsum drywall each side, 5-1/2" QuietZone® Acoustic Batts	
1 Hr.	E90-99102	63	2x6 QuietZone® Acoustic Framing on 24" centers, double layers 5/8" type x gypsum drywall each side, 5-1/2" QuietZone® Acoustic Batts	

QuietZone Framing is backed by a product warranty

Owens Corning and Tembec warrant that QuietZone Framing is free from defects in workmanship and materials. When properly installed and when tested according to ASTM E90-99, QuietZone Framing will perform to the STC ratings specified in this brochure.